

Ch 1

HW:RC; Sec 1.3 Written; ReinFWks Sec 1.3

Sec 1.3

obj: Analyze data by the use of a graph.

## Graph

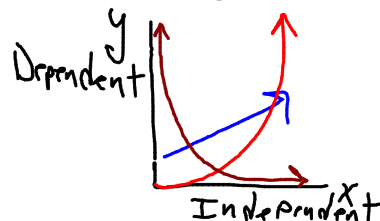
- A visual display of the data collected During an Experiment.
- Purpose of a graph is for a Reference.
  - \* make quick decisions.
- Graphs show trends, show comparisons and show the parts that make-up the whole.

9/3/02 8:01 AM

## 3 Types of Graphs

### 1) Line graph

- The purpose is to show trends.
- Represents how the dependent variable changes w/ the independent variable.



\* Linear Trend

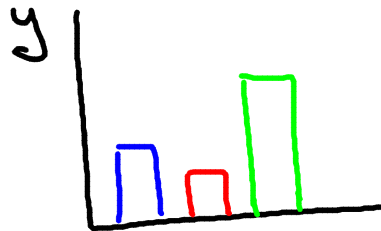
\* Quadratic Trend.

\* Inverse Trend.

9/10/2003 2:08 PM

### 2) Bar Graph

- The purpose is to compare values.



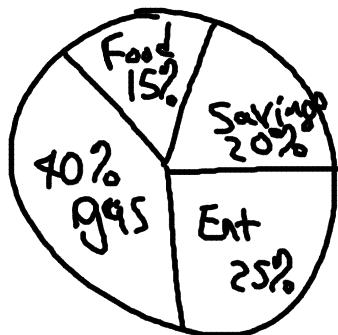
- Compare the Dependent variables w/ each other

9/10/2003 2:16 PM

### 3) Pie Graph / Circle Graph

- The purpose is to represent the parts of the whole.

# 100



# 40 gas  
# 20 savings  
# 25 entertainment.  
# 15 Food

9/10/2003 2:20 PM